

76 million

worldwide are on the autism spectrum...

Where will they work?

Autism diagnosis' are rising

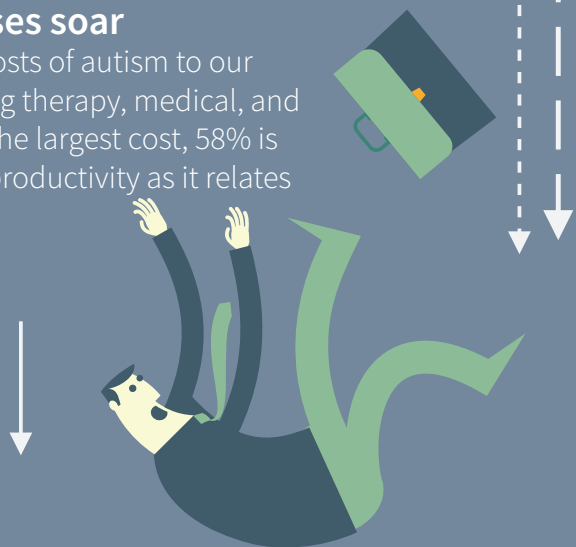
1 in 59 children had a diagnosis of autism spectrum disorder (ASD) by age 8 in 2014, a 15% increase over 2012. (CDC, April 2018)

Most are unemployed or under-employed

Up to 90% of adults on the autism spectrum are either unemployed or under-employed; 77% who are unemployed say they want to work. (National Autistic Society, 2016)

Economic losses soar

In looking at the costs of autism to our economy, including therapy, medical, and support services, the largest cost, 58% is individual loss of productivity as it relates to unemployment. (WISH Autism Report, 2016)



Businesses fear getting support wrong

Workers with autism often require special support and accommodations at work; 60% of employers fear they will get the needed support wrong. (National Autistic Society, October 2016)

Bullying and harassment are common

48% experienced bullying, discrimination or harassment at the office; 51% attribute it to their autism. (National Autistic Society, 2016)



Strengths are very individual, but often include:

- Attention to detail and systematic way of working
- Sustainable concentration for routine activities
- Logical analysis
- Pattern recognition
- Error detection

An asset to any company

Special talents in logic, detail and pattern recognition are typical for many people with autism as well as enormous concentration and a pronounced interest in IT, physics, mathematics and technology.

Support, understanding and acceptance needed

The most meaningful changes needed in the workplace to help autistic people are support, understanding or acceptance. (National Autistic Society, October 2016)

Solving the tech-talent gap

While 65% of CIO's surveyed by KPMG show hiring challenges are hurting the IT industry, auticon's talented autistic workforce is the ideal solution for the tech-talent gap.



autism at work

Data compiled by auticon

auticon exclusively employs people on the autism spectrum as technology consultants. All auticon consultants and our clients are supported in their daily work by our specially trained job coaches and project managers.

Learn more at www.auticon.com